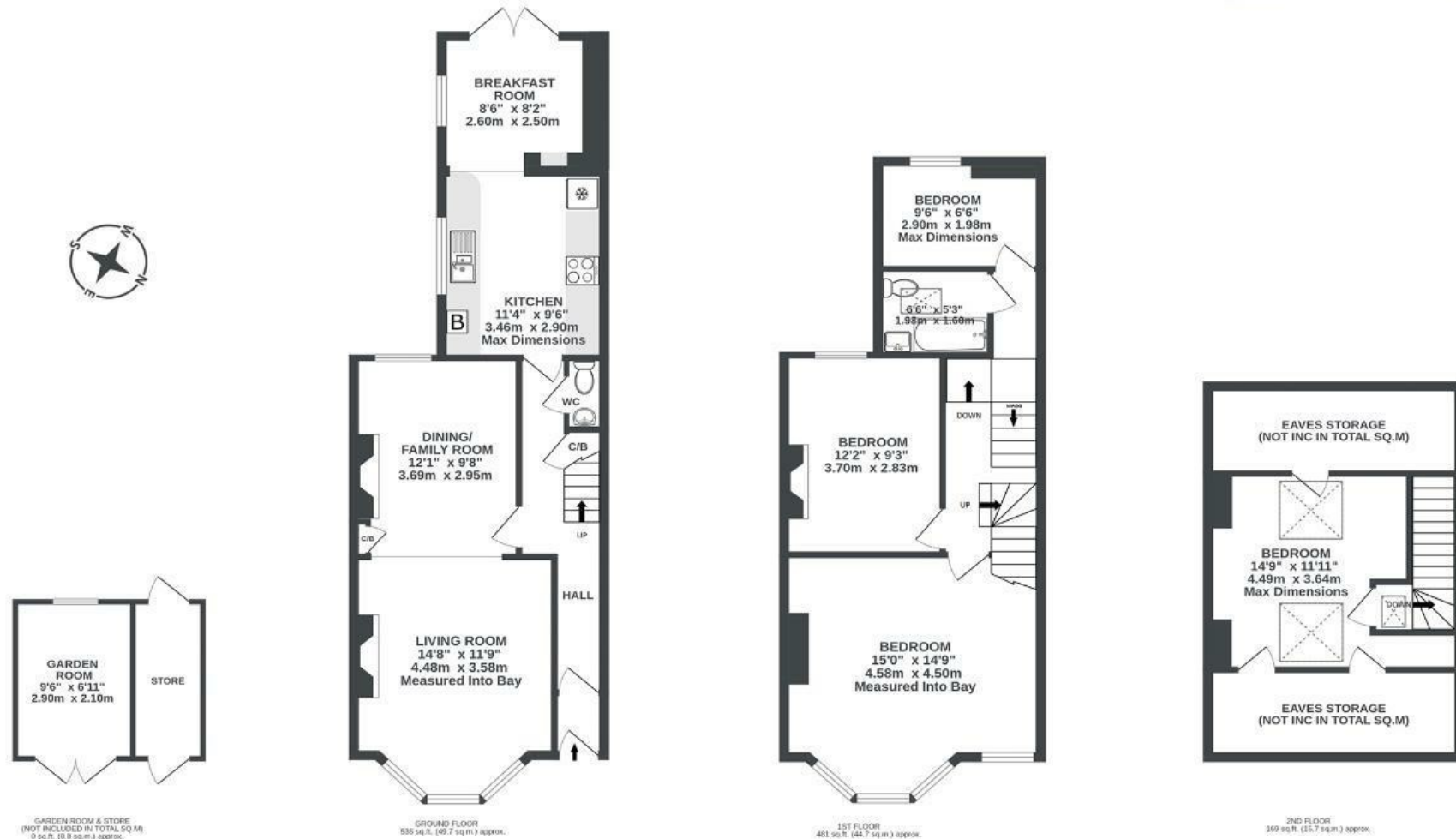


# Conway Road

## BRISLINGTON

APPROXIMATE FLOOR AREA  
110.1 SQM / 1185 SQFT



Illustrations are for reference purposes only, measurements are approximate, not to scale.

Boardwalk

# Conway Road

BRISLINGTON, BRISTOL



£485,000



4 Bedrooms



BS4 3RE



1 Bathrooms

*"We love the character of our home - the wooden floors, high ceilings, and beautiful fireplaces. The garden is our favourite spot, a private sun trap perfect for relaxing in the summer."*

